

Table of Contents

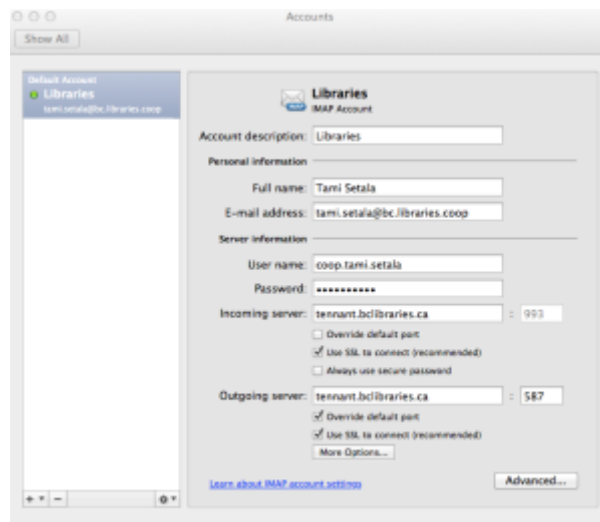
Outlook for Mac (v. 14.2.4) Outgoing Email Setup	1
---	----------

Outlook for Mac (v. 14.2.4) Outgoing Email Setup

Go to Menu > Accounts.

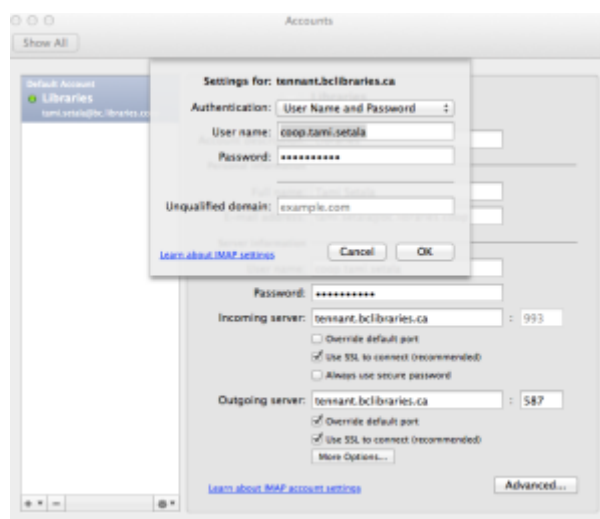
In the /Server Information/ section, change the outgoing server to "mail.libraries.coop" and the port number (located after the colon) to "587"

In addition, select the "Override default port" option and the "Use SSL to connect (recommended)" option.



Click on the More Options button. There, you will be prompted with options for additional Server Settings.

For Authentication, select "User Name and Password." Insert your e-mail username (coop.firstname.lastname) and e-mail password. Then click 'OK' to apply those changes.



From:
<https://wiki.libraries.coop/> - **BC Libraries Coop wiki**

Permanent link:
<https://wiki.libraries.coop/public/outlook-mac-mail-settings>

Last update: **2024/05/08 22:04**

